

Table of Contents

I-DEAS User Group Meeting	1
I-DEAS General – Accessing CAD-PLM Web Page from within I-DEAS	1
I-DEAS General – Creating High Quality Images.....	1
I-DEAS Simulation – New Best Practices Posted to CAD-PLM Web Site	2
I-DEAS Simulation – QMan	2
I-DEAS/NX Interoperability	2

I-DEAS User Group Meeting

For this month's user group meeting, I am looking for volunteers to present or demonstrate new functionality in I-DEAS 12. Please let me know if you are interested.

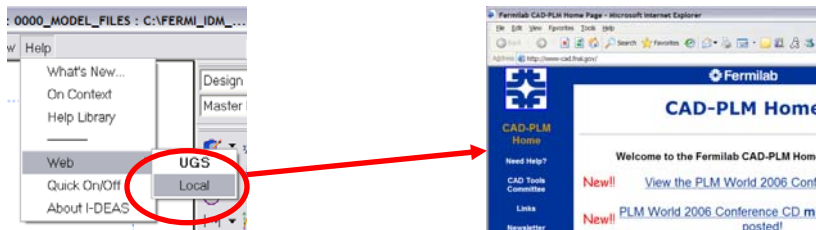
I-DEAS User Group Meeting

Friday, September 22nd, 2006, 9:00-11:00 AM
Hermitage Conference Room – ICB 2nd Floor East



I-DEAS General – Accessing CAD-PLM Web Page from within I-DEAS

Did you know that you could directly access the Fermilab CAD-PLM Home page from within I-DEAS? Go to the "Help" pulldown menu and pick "Web...Local". It will take you directly to [www-cad](http://www-cad.fnal.gov).



I-DEAS General – Creating High Quality Images

A document on creating high quality images using I-DEAS has been posted to the CAD-PLM web site at www-cad/ideas under the "Miscellaneous Topics" section. Thanks to Don Mitchell for providing this tutorial.



I-DEAS Simulation – New Best Practices Posted to CAD-PLM Web Site

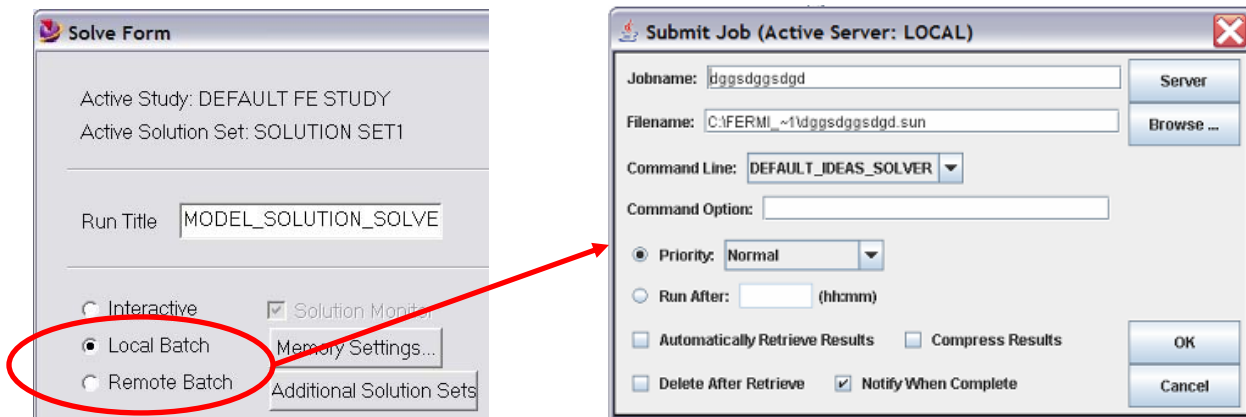
There are three new presentations available at CAD-PLM for Simulation users. These presentations are old and out-of-date. However, the methodologies are still valid.

1. Bottom Up Meshing Techniques
2. Advanced Modeling Techniques – Topics covered:
 - Modeling Bolted Connections
 - Cyclic Symmetry with Interference
 - Modeling Structures with Cables
 - Connecting Beams, Shells to Solids
 - Breakout Modeling
 - Feature Replacement
 - The Amazing Xpanding Rigid Element

I-DEAS Simulation – QMan

QMan is a Java program that allows an FE analyst to submit model solutions to either your own computer or a remote computer at a specific time of day. This program is useful if you want to use another computer with more “horsepower” than your own or if you want to schedule your solve to take place in the off hours. Currently, only the “Local Batch” option will work since a QMan server must be defined before the “Remote Batch” option can be used. If you or your group have a computer that you would like to use for this purpose, let me know. I can assist you in setting up one up.

To use Qman, set up your FEM Solution Set and pick “Manage Solve”. Select one of the “Batch” options prior to solving. QMan will start and give you more options to choose from.



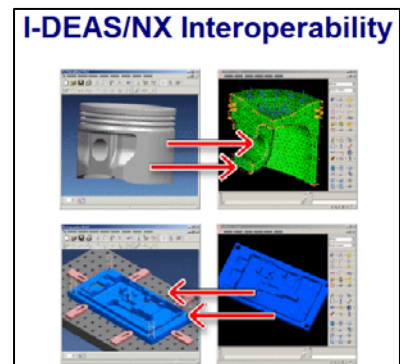
If you want to learn more about QMan, see C:\UGS\ideas12\qman\doc\index_client.htm.

I-DEAS/NX Interoperability

Users with NX4 installed can access any of the 5 I-DEAS TDMs directly within NX. This functionality allows NX users to retrieve “reference” versions of I-DEAS part and assembly data for use with NX. This functionality is particularly useful for user of NX CAM. See the *I-DEAS/NX Interoperability Guide* in the *I-DEAS Help Library* for more information.

There are limitations to this functionality:

1. It only works for parts and assemblies. I-DEAS drawings and FEMs are not accessible.
2. This is a one way transfer from I-DEAS to NX. Parts &



assemblies cannot not be modified in NX and checked back into TDM.

To retrieve data from I-DEAS 12 to NX 4,

1. Open an I-DEAS MasterModeler or MasterAssembly session in the TDM you wish to access.
2. Start NX and select the "File...Open I-DEAS..." pulldown menu.
3. NX will begin "talking" to I-DEAS in the background and an "I-DEAS Browser" window will open showing the TDM Project/Library structure.
4. Expand the Project and Library where you have your part or assembly stored.
5. Select the part or assembly and pick "OK".
6. NX will then attempt to import the selected item.

