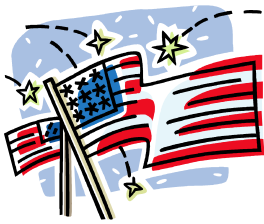


## Table of Contents



I-DEAS User Group Meeting.....	1
ANSYS Multiphysics License Access .....	1
Making I-DEAS & ANSYS work together.....	2
I-DEAS 12 Rollout Summary .....	2
Batch Plot Now Available in I-DEAS 12.....	2
Bugs in I-DEAS 12.....	2



### I-DEAS User Group Meeting

For this month's user group meeting, I am looking for volunteers to present or demonstrate new functionality in I-DEAS 12. Please let me know if you are interested.

#### **I-DEAS User Group Meeting**

Friday, July 14, 2006, 9:00-11:00 AM  
Hermitage Conference Room – ICB 2<sup>nd</sup> Floor East  
Agenda:

1. I-DEAS 12 presentation by yet to be named volunteer.
2. I-DEAS 12 Q & A

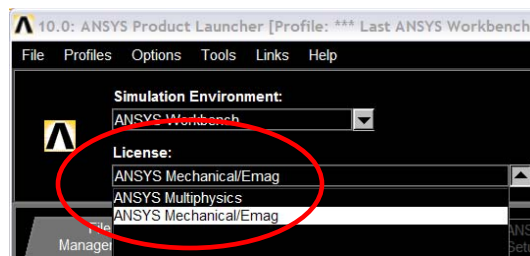


### ANSYS Multiphysics License Access

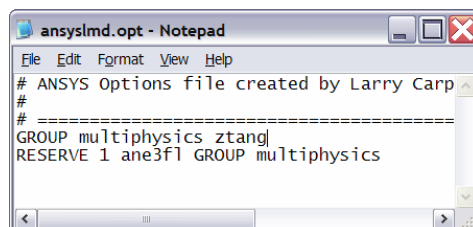


There have been recent issues with the use of our single Multiphysics license. People have been checking out the Multiphysics license when they don't need it. This prevents others that do need it from using it. I need feedback from the ANSYS users that actually use the Multiphysics license about how they want to handle the situation. There are two ways to resolve this issue without purchasing more licenses: 1) voluntarily or 2) by restricting access via a reserved user list.

Option 1) requires each ANSYS user to be aware of what license he/she is actively using. Please check the 'Product Launcher' and make sure that your default is NOT set to 'ANSYS Multiphysics'.

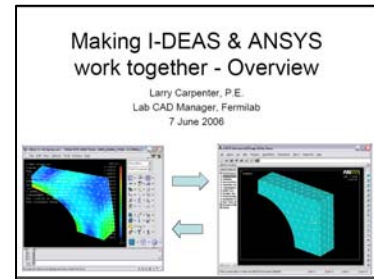


Option 2) requires the ANSYS community to provide me a short list of select users from each group that will be granted access to the Multiphysics license. Everyone else will be excluded from using it.



### Making I-DEAS & ANSYS work together

I have put together a simple overview slide show listing a few methods to create and solve a FE model from geometry created in I-DEAS. It is located at <http://www-cad/ansys>. If there is enough interest, I can schedule another ANSYS users meeting to discuss this topic in more detail.



### I-DEAS 12 Rollout Summary

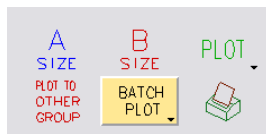
The rollout of I-DEAS 12 is almost complete with the final step of removing I-DEAS 11 still under way. The deployment of the software to the client PCs went relatively well due to the use of SMS (Systems Management Server) to install the software automatically at night. However, there were some exceptions that required intervention. Some PCs didn't receive I-DEAS 12 because they were misconfigured and couldn't receive the SMS deployment. Others didn't receive it because they turned off their PCs or didn't log off at night.



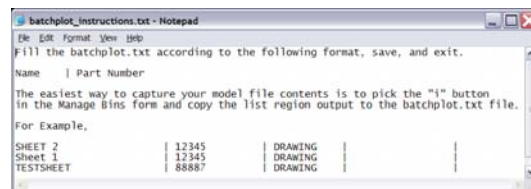
Since the use of SMS to deploy CAD software is new to Fermilab, some problems were anticipated. Even with these issues, using SMS to deploy CAD software is much more efficient than having several people walking around to every PC, kicking users off their PCs, and manually uninstalling/installing software. It also ensures that the software is installed and configured correctly for everyone.

We will be using SMS from this point on to deploy CAD/PLM software and will work to eliminate the aforementioned issues to assure even better success using SMS in the future.

### Batch Plot Now Available in I-DEAS 12



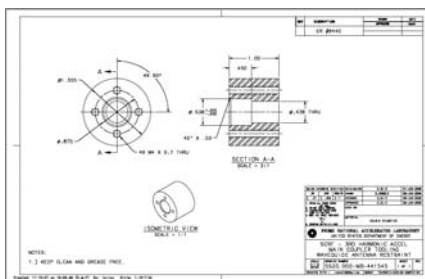
I have updated the Batch Plot program for I-DEAS 12 and made some improvements as well. When selecting the Batch Plot program, you will be prompted to add/modify the list of drawings to print.



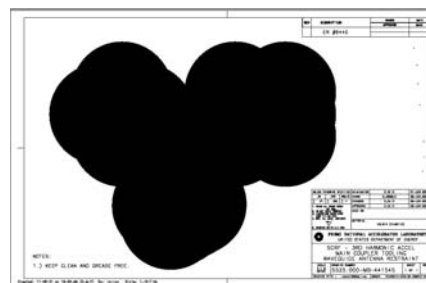
### Bugs in I-DEAS 12

#### Plotting Points

The ability to plot points in I-DEAS 12 was promising up until a bug was discovered where 3D reference points in drafting were plotting as giant solid-filled circles. I have submitted IR #5544652 to GTAC. They assigned it PR #5398621 with a "Critical" priority.



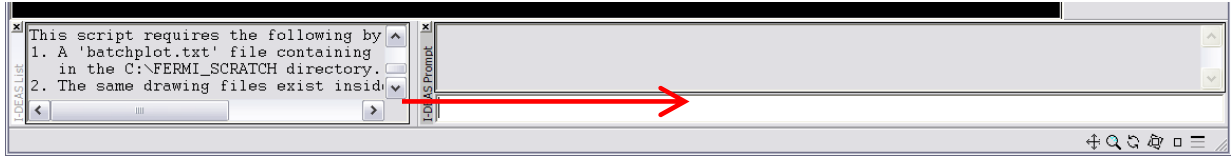
Plot Points OFF



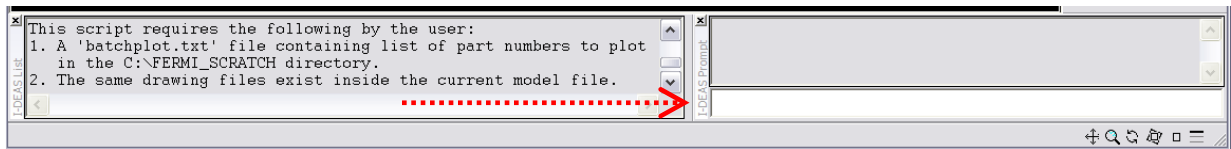
Plot Points ON

### List Region Scrolling

Whenever a text string longer than the width of the List Region is output to the List Region, the horizontal scroll bar moves to the end of the text string. This is annoying. A PR (05443939) already exists for this issue. A workaround is to resize your List Region so that it is longer to minimize the effect of the scrolling.



Before List Region Resize



After List Region Resize

Have a Great Independence Day!

